

The background of the page is a blurred photograph of a large assembly room. In the foreground, the silhouettes of several people's arms are raised, suggesting a concert or a public event. Two large, white, semi-transparent shapes are overlaid on the image: a vertical rectangle on the left and a vertical shape with a rounded top on the right. The text is positioned in the bottom left and bottom right corners.

HOWARD ASSEMBLY ROOM

Technical Specification



INDEX

- > Overview
- > Staging and Seating
- > Audio
- > Lighting
- > AV
- > Backline
- > Rigging
- > Load in/out
- > Backstage
- > Merchandise
- > Digital Signage
- > Health and Safety
- > Staffing
- > Enquiries

**Howard
Assembly
Room**





Overview

The Howard Assembly Room at Opera North is a multi-purpose, fully flexible performance venue with adjustable staging and seating. It is licensed by Leeds City Council for the performance of Live Music, Dance, Film, Recorded Music, Drama and the sale of alcohol.



Staging and Seating

The staging is modular made up of 900mx900m frames with birch ply boards on top

Height: 540mm

There are 3 stage depths:

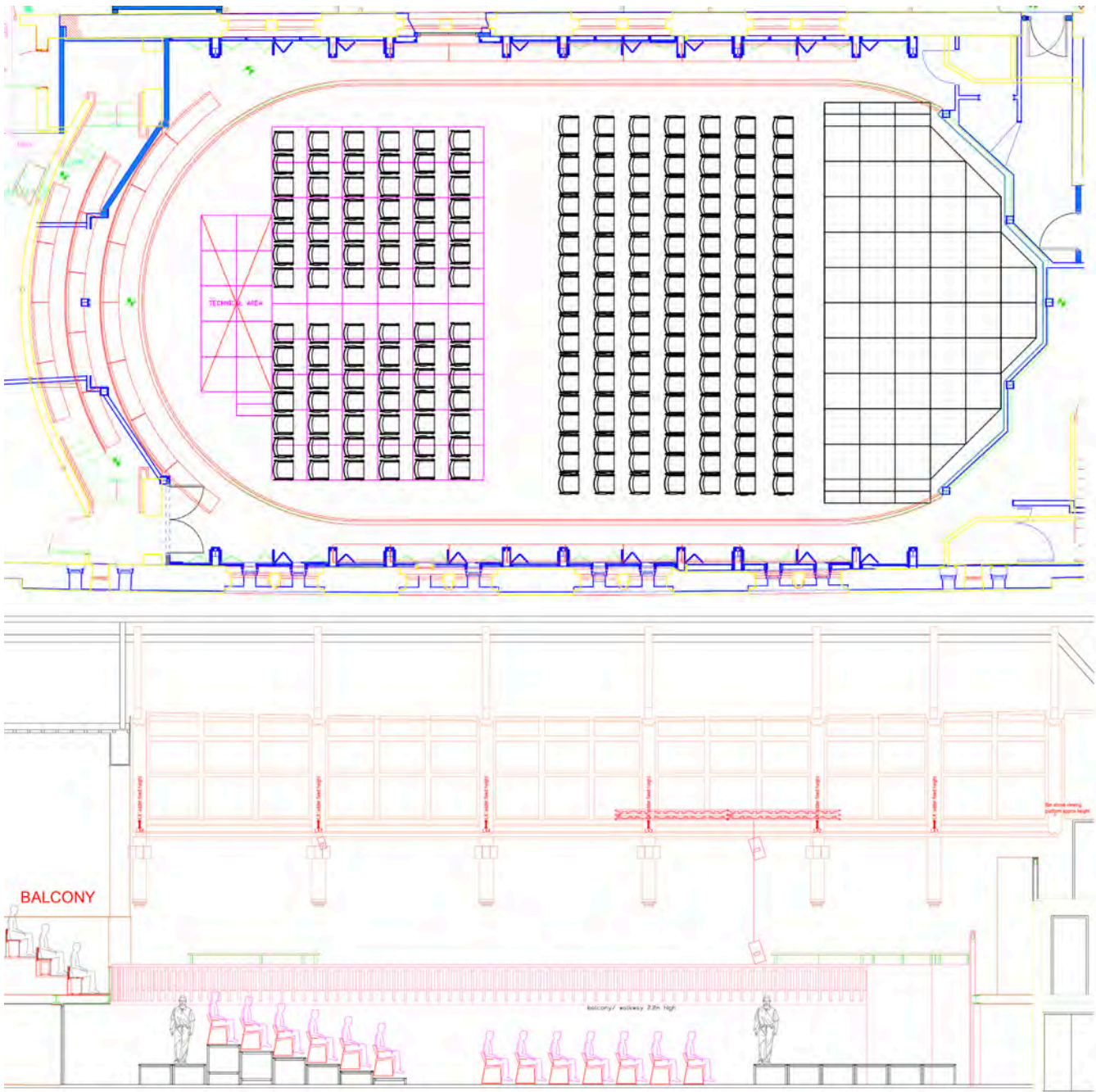
5 Stage Boards Deep - 4.5m

6 Stage Boards Deep - 5.4m

7 Stage Boards Deep - 6.3m

At its widest point the stage is 9m. It tapers off towards the back of the stage (See CAD below)

Stage depth and number of stalls seats vary according to event set up, consult for details.



(This is 5.4m deep with 6 staging boards marking the depth- also for maximum 7 rows of chairs on the flat)

Staging and Seating

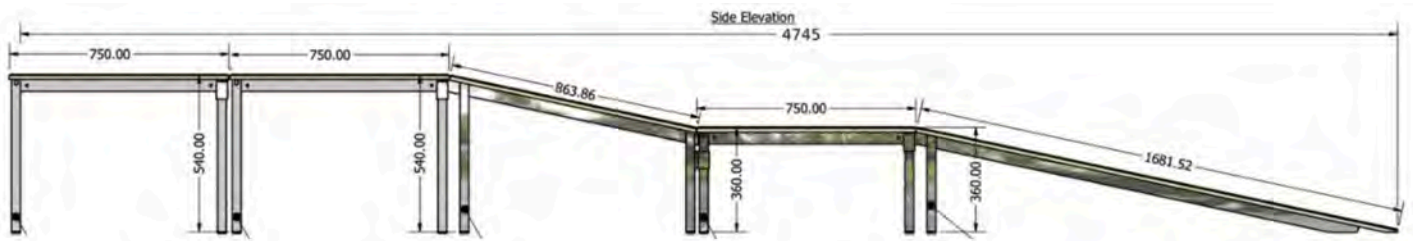
Risers

Risers of a height of 180mm can be added to the stage. These are all 900mm x 900mm in size.
20x 180mm risers (slot into the staging)
20x 360mm risers (on top of the staging)

Stage Access

Access on to stage is via two steps either side of stage- SR will be removed if monitor position is needed.
A stage ramp can be put on parallel to the front of the stage for wheelchair access- This will either reduce the stage size or the audience size depending on event.

The ramp is 4,745mm long and raises to 540mm.



Stalls Flat floor and tiered seating

The tier seating is a modular raked seating platform allowing for 84 chairs with a centre aisle- The FOH tech platform is set behind this at a height for sightlines.

There are multiple seating capacities depending on staging depth.

236 Max capacity with staging at 4.5m depth
217 Max capacity with staging at 5.4m depth
198 Max capacity with staging at 6.3m depth

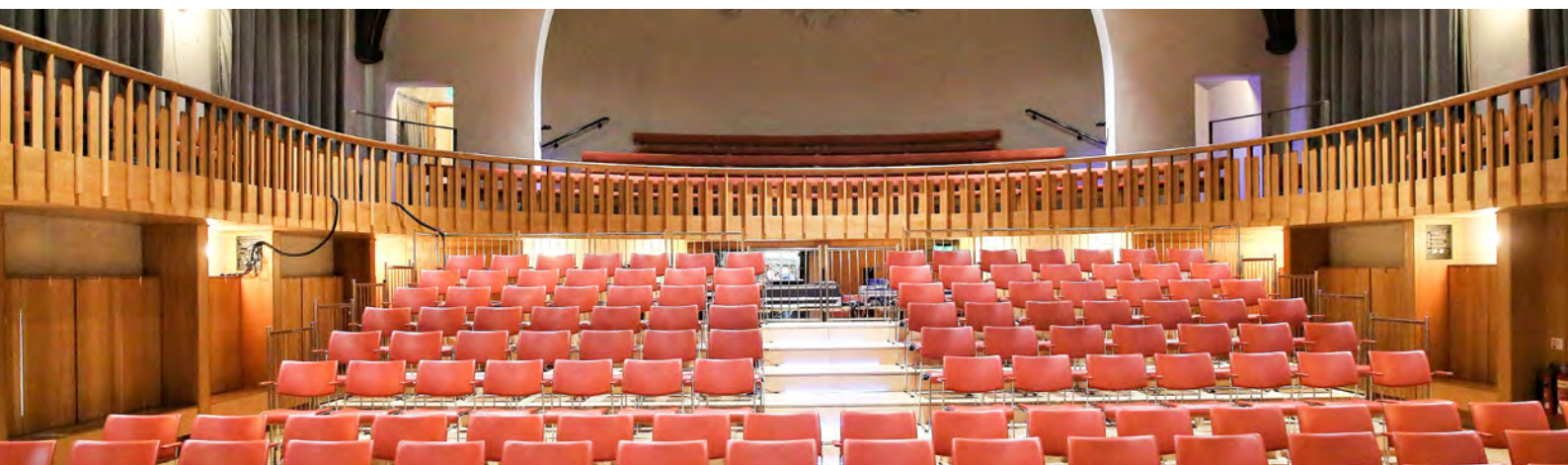
The stage depth is decided by the HAR technical manager upon inspection of a technical rider

Gallery seating

105 max capacity

Wheelchair access

Seating for those in wheelchairs can be accommodated at stalls level





PA

4 x Meyer UPJ-1P (Flown)
2 x Meyer 500-HP Subs
2 x KV2 EX6 (Delays)

Monitoring

4 x Martin Audio XE300 + Martin iK42 Amplifier

Mixing Consoles

DiGiCo Quantum 225 + DQ-Rack
Yamaha LS9-32
Yamaha LS9-16
Soundcraft UI-12

Signal processing and Crossover

Q-Sys Core 110f

Microphones

4 x Shure SM58
2 x Shure Beta 58A
4 x Shure SM57
4 x Shure Beta 57A
1 x Shure Beta 52A
1 x Shure Beta 91A
1 x Shure SM81
2 x DPA 4099 (matched pair)
2 x Audio Technica AT 4040A
2 x Rode NT5
3 x Sennheiser e604
1 x AKG D112
4 x Shure MX418 Gooseneck Microphones
2 x Sennheiser Handheld Radio Microphones
2 x Sennheiser ew100 receivers
2 x DPA 6060 Lavalier Microphones

DI's

4 x BSS AR133 Active DI

Microphone Stands

14x Tall Boom
8x Short Boom
4x Table top clamps

Instrument stands

2x Keyboard stands
2x Guitar Stands

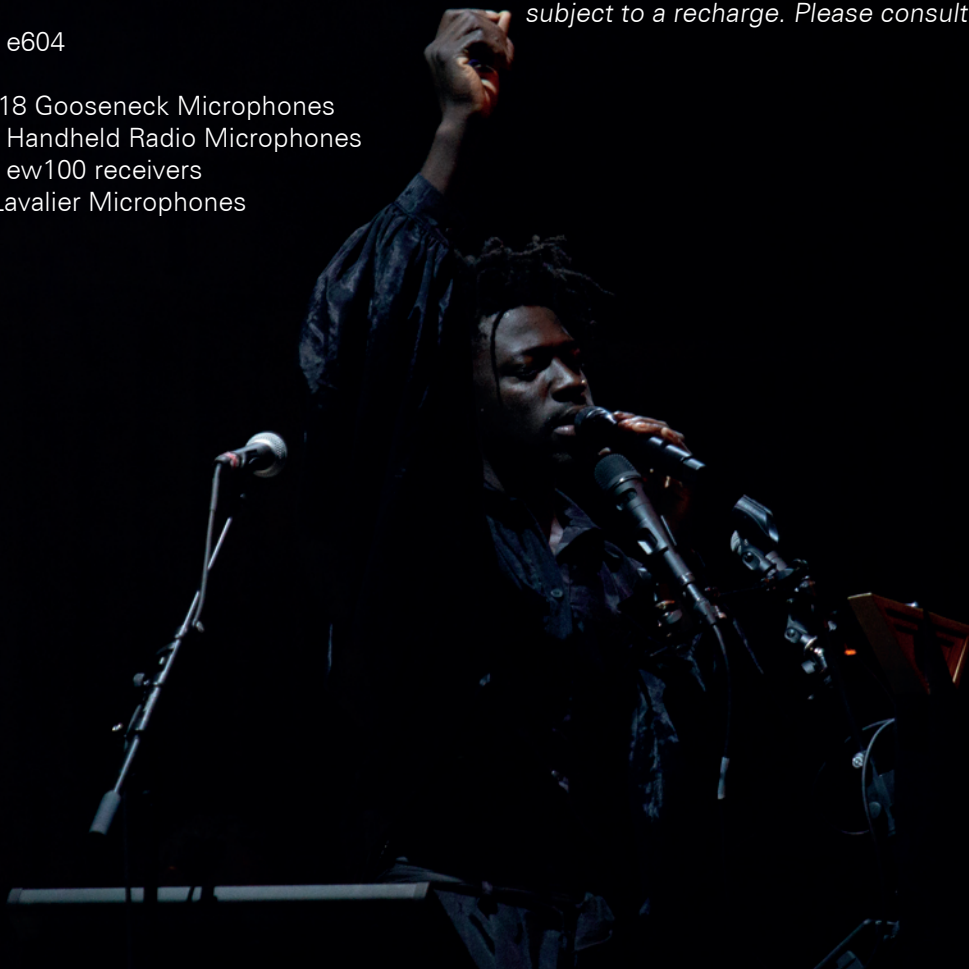
Musician Chairs

Available upon request

Please be aware that there is a 110dB(C) noise limit enforced in the venue. This is measured from the front of house position approximately 15m away from the front of the stage.

PA is driven by Dante from Digico Quantum 225. If touring a desk you can patch via Dante or via stereo analogue lines at FOH.

More equipment such as more monitors and microphones are available upon request but may be subject to a recharge. Please consult for details.



Lighting

Control

- 1 x Chamsys MQ60 Lighting Console
- 1 x Chamsys Extra Wing Compact
- 1x Snakesys Node
- 1x Wireless DMX control

Generic fixtures

- 12 x Source 4 PARNels
- 12 x Source 4 PARs
- 12 x Source 4 Zoom 25° - 50° Profiles

Special effects

- Look Solutions Unique Hazer 2.1

Moving Fixtures

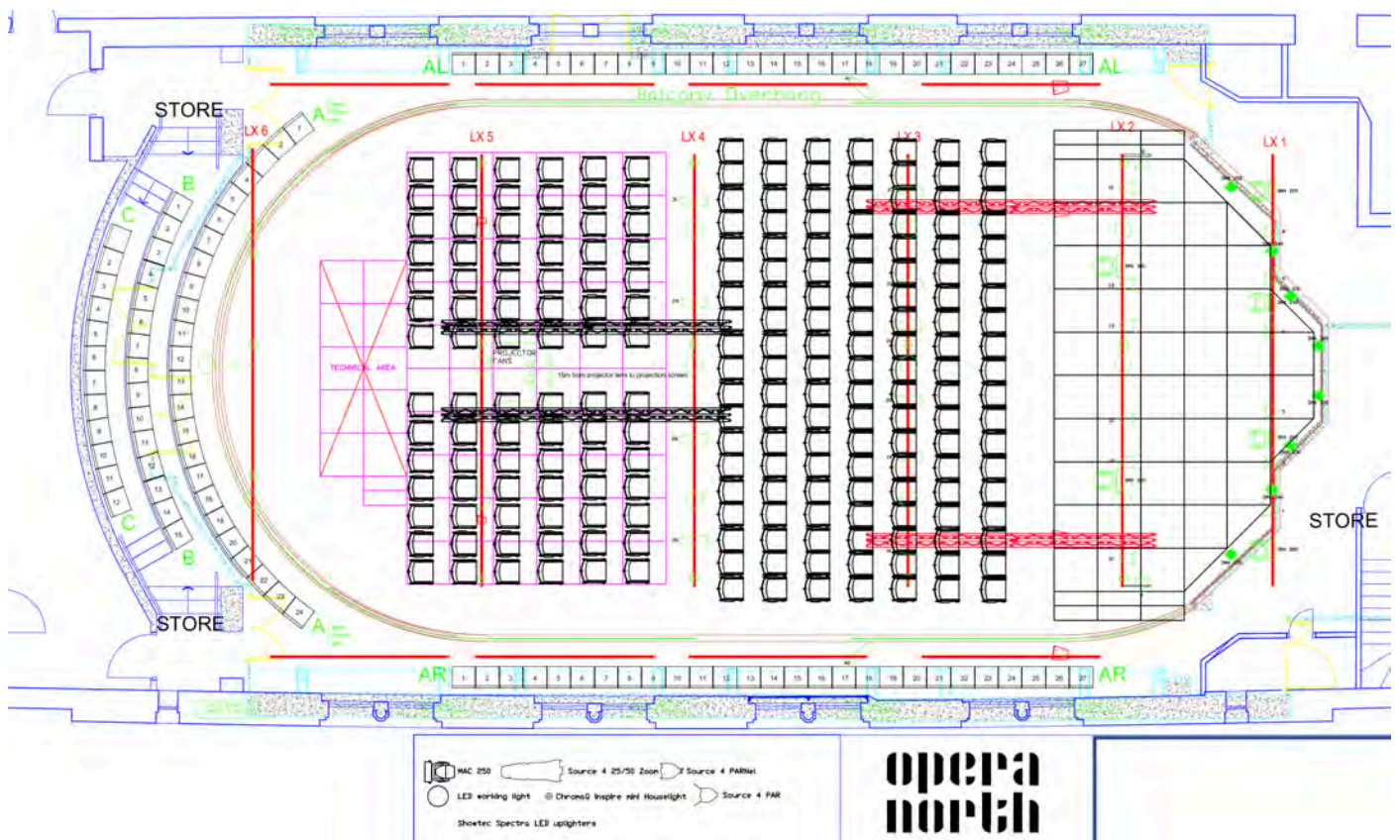
- 6 x MAC 250 Entour Moving Lights

RGBW Fixtures

- 8 x Showtec Spectral M1000 O4 LED PARs
- 15 x Chroma-Q Inspire Mini RGBW LED House Lights
- 6x Showtec Smartbats

Power/dimming

- 60 Channels of dimming across a 120 circuit grid.
- 1 x 32A 3 phase power supply available stage left





LX Patch

Universe	Dim/Power (Hard)	Circuit	DMX	Head	Mode
1	1	1	1	ETC Source 4 PAR	
	2		2		
	3	3	3	ETC Source 4 PAR	
	4	4	4	ETC Source 4 PAR	
	5	5	5	ETC Source 4 PAR	
	6	6	6	ETC Source 4 PAR	
	7	7	7		
	8	8	8	ETC Source 4 PAR	
	9	9	9	ETC Source 4 PAR	
	10	10	10	ETC Source 4 PAR	
	11	11	11	ETC Source 4 PAR	
	12	12	12	ETC Source 4 PAR	
	13	13	13	ETC Source 4 PAR	
	14	14	14	ETC Source 4 PAR	
	15	15	15	ETC Source 4 PAR	
	16	16	16	ETC Source 4 PAR	
	17	55	17	ETC Source 4 Profile 25/50 Zoom	
	18	18	18	ETC Source 4 Profile 25/50 Zoom	
	19	19	19	ETC Source 4 Profile 25/50 Zoom	
	20	20	20	ETC Source 4 Profile 25/50 Zoom	
	21	21	21	ETC Source 4 Profile 25/50 Zoom	
	22	22	22	ETC Source 4 Profile 25/50 Zoom	
	23	23	23	ETC Source 4 Profile 25/50 Zoom	
	24	78	24	ETC Source 4 Profile 25/50 Zoom	
	25	25	25	ETC Source 4 Profile 25/50 Zoom	
	26		26		
	27	27	27	ETC Source 4 Profile 25/50 Zoom	
	28		28		
	29		29		
	30	30	30	ETC Source 4 Profile 25/50 Zoom	
	31	31	31	ETC Source 4 Profile 25/50 Zoom	
	32		32		
	33		33		
	34		34		
	35		35		
	36		36		
	37		37		
	38		38		
	39		39		
	40	52	40	ETC Source 4 PARNel (Subject to change)	
	41	53	41	ETC Source 4 PARNel (Subject to change)	

	42	58	42	ETC Source 4 PARNet (Subject to change)	
	43	59	43	ETC Source 4 PARNet (Subject to change)	
	44	79	44	ETC Source 4 PAR (Subject to change)	
	45	80	45	ETC Source 4 PAR (Subject to change)	
	46	73	46	ETC Source 4 PAR (Subject to change)	
	47	74	47	ETC Source 4 PAR (Subject to change)	
	48		48		
	49		49		
	50		50		
	51		51		
	52		52		
	53		53		
	54		54		
	55	2	55	Hot Power Unit (Mac 250 Hot Power)	
	56	7	56	Hot Power Unit (Mac 250 Hot Power)	
	57	81	57	Hot Power Unit (Mac 250 Hot Power)	
	58		58	Hot Power Unit	
	59		59	Hot Power Unit	
	60		60	Hot Power Unit	
			200	Martin Mac 250 Entour	Extended 18
			220	Martin Mac 250 Entour	Extended 18
			240	Martin Mac 250 Entour	Extended 18
			260	Martin Mac 250 Entour	Extended 18
			280	Martin Mac 250 Entour	Extended 18
			300	Martin Mac 250 Entour	Extended 18
2	VDIM 5-1		1	Chroma Q Inspire Mini House Lights (LX 2)	5 Channel
	VDIM 5-2		6	Chroma Q Inspire Mini House Lights (LX 2)	5 Channel
	VDIM 5-3		11	Chroma Q Inspire Mini House Lights (LX 2)	5 Channel
	VDIM 5-4		16	Chroma Q Inspire Mini House Lights (LX 2)	5 Channel
	VDIM 5-5		21	Chroma Q Inspire Mini House Lights (LX 2)	5 Channel
	111		111	Hot Power House Lights (Generic Dimmer)	5 Channel
	112		112	Hot Power House Lights (Generic Dimmer)	
	113		113	Hot Power House Lights (Generic Dimmer)	
	114		114	Hot Power House Lights (Generic Dimmer)	
	115		115	Hot Power House Lights (Generic Dimmer)	
	116		116	Globe lights (Generic Dimmer)	
3			320	Showtec Spectra M1000 tour Q4	10 Channel Tour
			330	Showtec Spectra M1000 tour Q4	10 Channel Tour
			340	Showtec Spectra M1000 tour Q4	10 Channel Tour
			350	Showtec Spectra M1000 tour Q4	10 Channel Tour
			360	Showtec Spectra M1000 tour Q4	10 Channel Tour
			370	Showtec Spectra M1000 tour Q4	10 Channel Tour
			380	Showtec Spectra M1000 tour Q4	10 Channel Tour
			390	Showtec Spectra M1000 tour Q4	10 Channel Tour
			500	Look solution Unique Hazer Fan	
			501	Look solution Unique Hazer Pump	

AV & Projection

Audio Visual Equipment

1 x Christie WU14K-M Projector
1 x Christie ILS lens 2.6 - 4.1
1 x Christie ILS lens 2.8-4.5SX+/2.6-4.1HD
1 x 16:9 Projection Screen (6.3m x 3.71m)
1x Macbook Pro M1 – Running Qlab and Logic Pro x
1xKVM
1xBlackmagic Teranex TX & RX
1xBlackmagic Mini ATEM Pro
Full fibre patch installed around venue.
Projector screen rigged to LX 1 at the back of stage. This impedes the back of stage by 0.5m
Projector lenses can be swapped out to project on the screen or project on the back wall and wooden acoustic panel at the back of stage.





Backline

- 1 x Steinway Model D Concert Grand Piano
- 1 x Ampeg SVT-CL Tube Bass Amp
- 1 x Ampeg SVT-410HLF Bass Cabinet
- 2 x Keyboard Stands
- 2 x Guitar Stands
- 2 x Piano Bench
- 11x Lit music stands
- Musician chairs and available upon request

Any additional instruments or backline required can be supplied but may be subject to a recharge unless otherwise agreed. Please consult for details.

Rigging

6 IWB Overhead Lighting bars with 8 circuits on each. Remaining circuits are located along side lighting bars (x 2) and at facility panels on floor and gallery level around the venue. Maximum load on each overhead lighting bar is 250kg. Maximum load on side lighting bars is 100kg.

The lighting rig in the venue is fixed as per the generic lighting plan (Any re-rigging is only available by special request and will require at least six weeks notice prior to the event.

Load in/out

The loading bay is location opposite Howard Opera Centre, 8 Harrison street, LS1 6PA. There are large gates leading to an undercroft alleyway. The loading lift is located at the end of this alleyway.

The venue is located on the second floor level of the building. Access from road level is by lift:

100cm clear width x 2100mm clear height.

Safe working load 1125kg.

There is no parking on site and the area has double yellow lines throughout. There is a 24 hour NCP car park located 2 minutes walk away from the venue. This parking has a height restriction of 2.05m. Parking options can be discussed in advance.

Backstage

Dressing Rooms

2x Dressing rooms with sofas, tables & chairs and mirrors

Green Rooms

1x Green room with running water, microwave, tea & coffee facilities, sofas, table and chairs

Iron and ironing board available for use

Showers and Toilets

1x Artists shower next to greenroom

6x Gender neutral toilets including access toilets and access shower room

Show Relay

Show relay in all back of house areas- there is control over volume in the greenroom and dressing rooms
This is a feed from the main PA, calls are not currently over show relay.

WiFi

WiFi is available for artists and merchandise



Digital Signage

We have digital screens around the venue, if you would like your content on these screens ahead of your event/gig please use the following spec and send to HAR technical Manager.

We have the following screens:

6x Landscape screens (2x include screens either side of stage)

2x Portrait screen

1x Large screen at box office

Video specs Screen resolution: 3840 x 2160 landscape / 2160 x 3840px portrait 4K (Minimum 1920 x 1080px)
Format: .mp4
Frame Rate: 25fps (this frame rate is essential)
Codec: H.264
Audio: None
Bitrate: 20mbs High Quality
If you don't have any 4K content that's fine. If you have mixed 4K and HD content that's fine as Sedna will scale up the HD to fit the screen.
It's essential to ensure all videos have the same 25fps, as different frame rates between adverts can cause playback issues.
It is best practice to ensure that video lengths are rounded up to the nearest second. This reduces the risk of playback issues and also makes it easier to create playlists using round numbers.

Image specs Images can be JPEG or PNG Screen resolution: 3840 x 2160 4K (minimum 1920 x 1080px)





Health and safety

Upon arrival to the venue, artists and staff will be briefed on the Health and Safety policy and evacuation procedure. Where appropriate, the HAR health and safety policy document must then be signed by the Tour Manager / Company Manager to agree that all members of the touring party have understood, and will abide by these regulations. From this point forward it is the Tour Managers / Company Managers responsibility to ensure all procedures are adhered to by any member of their company.

Risk Assessment

For any risk factors outside of the HAR generic risk assessments please provide your own RAs ahead of the event no later than a week prior to the event. HAR generic RAMs can be shared upon request.

PAT Testing

If providing own equipment please provide PAT log no later than a week prior to the event and make sure your equipment is tested and up to standard. We reserve the right to not allow use of any particular equipment that is not tested or we deem not suitable for use.

Special Effects

If you would like use of haze effects for your event/gig please let the HAR technical manager know in advance.

The following special effects would have to be approved by the HAR technical manager in advance and a risk assessment would need to be provided:

- > Strobe lighting
- > Confetti (Increased cleaning cost)
- > Power shots (Increased cleaning cost)
- > Lasers (no crowd scanning allowed)
- > Any other types of haze effect including smoke/fog machines

The following special effects are not allowed under any circumstances:

- > Pyrotechnics including DMX sparkler boxes
- > Flame effects
- > Explosives or flammable substances
- > Firearms/Replica weapons

Smoking

If there are any smokers in the touring party they must smoke outside

Under no circumstances is smoking or vaping allowed in any indoor areas of the venue. If the artist smokes please use smoke outside. Burning of incense is not allowed in dressing rooms, green rooms or stage. If smoking, vaping or incense are used this will trigger the fire alarm. Any costs incurred for fire service call out will be passed to the artist/management. The venue holds the right to show stop in any circumstances regarding triggering of fire alarm.

Access

The Howard Assembly Room and its backstage area/toilets/dressing room are fully accessible to wheelchair users. The Howard Assembly Room stage is generally accessed via two steps but please inform us if you require step free access, or have any other access requirements.

Standing Gigs

Audio

For standing gigs the PA is upgraded to:

- 2x Meyer UPA 1p (Flown)
- 2x Meyer UPA 2p (Flown)
- 2x Meyer USW Subs
- 3x Meyer UPM 1p Front Fills

Crowd Control

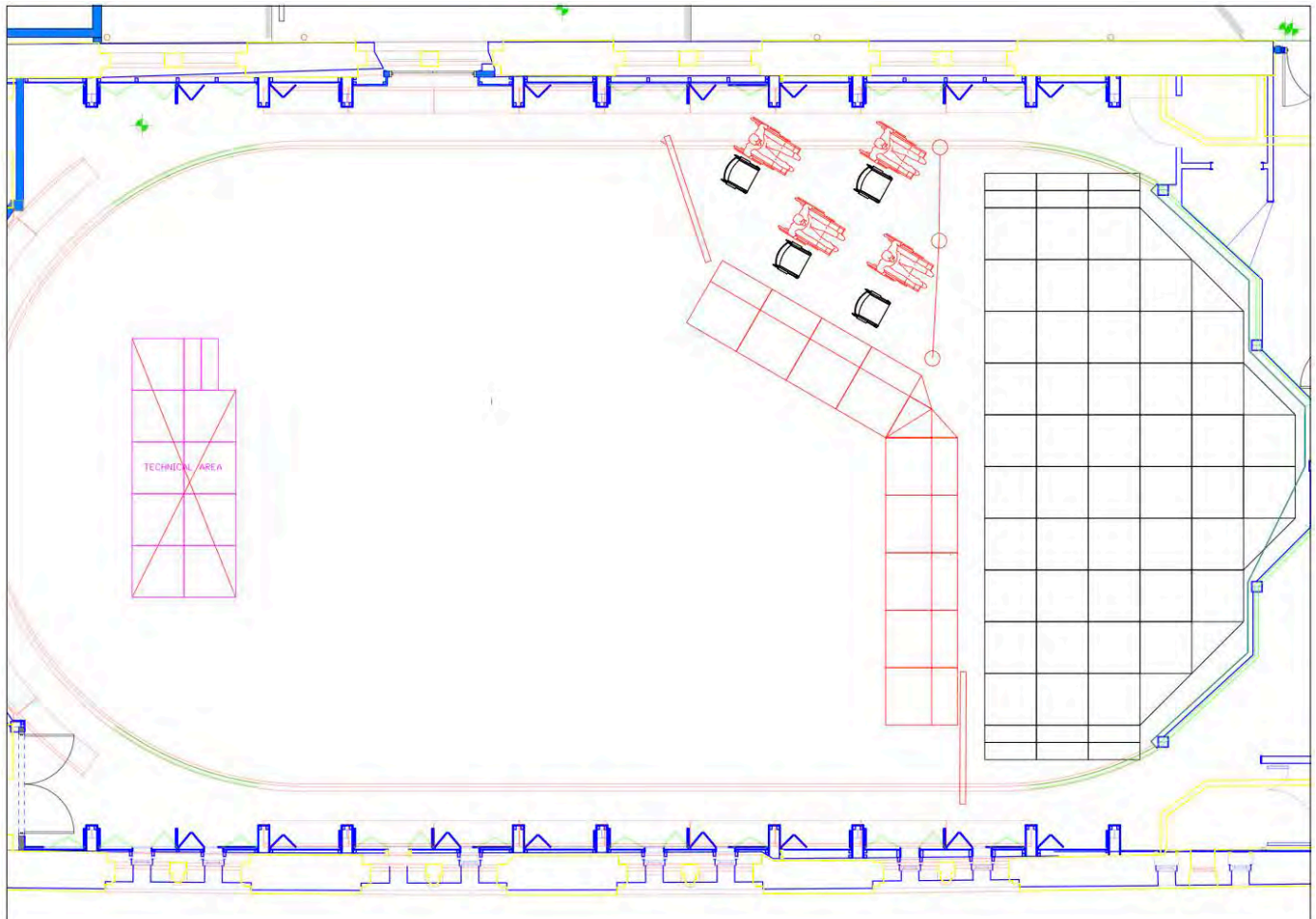
A MOJO barrier is installed in front of the stage for protection of the crowd and artist in case of crush scenarios. The barrier angles off to allow an access area near the front of the stage right (See CAD below). This barrier not negotiable and will remain in for all standing events.

Monitor Position

Monitor world and stage boxes live stage right. Unfortunately stage left is a fire gang way and cannot be used.

FOH Position

FOH is on a 180mm raised platform with railings around. Total footprint 4.5m x 1.8m. Please advise if needing a bigger footprint.



Enquiries

For all enquiries relating to the venue, please contact:

HAR Technical Manager – Sam Day
Sam.day@operanorth.co.uk
07469153654

Programming enquiries should be addressed to:

HAR Programmer – Dominic Gray
Dominic.gray@operanorth.co.uk

Venue address

Howard Assembly Room
32 New Briggate
Leeds
LS1 6NU

